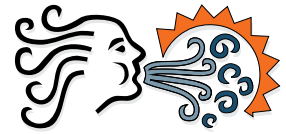


# SERIES 816 REPLACEMENT CHASSIS

California Heat Pump CHP-RF and ClimateMaster 816



ADIRONDACK-AIRE



The Adirondack-Aire 816 Series zerOzone replacement chassis provides environment friendly, high efficiency cooling and heating where individual, quiet control is a priority. This application flexible unit is a direct replacement\* for California Heat Pump CHP-RF and Climate Master 816 and 817 series vertical stacked water source heat pump chassis. The chassis is a part of a complete system, which consists of the chassis, blower section, control box, and furred-in room cabinet with risers. The chassis contains the compressor, air side heat exchanger, water side heat exchanger, and refrigerant circuit control and safety components.

The 816 is dimensionally identical to the original for a fast, easy, and trouble free-installation. Quality components, careful design and testing and the latest in environment friendly technology mean long unit life, user satisfaction, and lower energy costs. Consider the extensive list of standard features which includes: powder painted drain pan, refrigerant circuit access ports, air filter, pull handle, compressor protected suction accumulator, evaporator freeze protection, water coil freezestat, high-pressure over protection, and lock out circuit\*\* Adirondack-Aire is the replacement solution for upgrading old, worn out, inefficient original chassis. Cold Point Corp. backs the 816 with a customer friendly one-year parts and labor warranty and five-year compressor warranty, (see Warranty document for details).

\*Various wiring configurations were produced. See specs and price sheet for details.

\*\* Model specific. May include lock out circuit, 5 minute anti-short cycle timer or interconnect control utilizing control panel logics.

## APPLICATION & BENEFITS



### FAST AND EASY REPLACEMENT

The Adirondack-Aire 816 series zerOzone replacement chassis fits the existing California Heat Pump and ClimateMaster room cabinets and works with the existing blower section and control box without modification\*. Because the chassis dimensions and construction details are like the original unit, replacement work is fast and easy. The chassis installs without the need for water loop shut down or draining. Water and drain connections line right up to the original installation. The electrical connectors plug directly into the control box connectors. A chassis pull handle is provided to facilitate easy removal and handling. Using Adirondack-Aire replacements eliminate the need for room renovation, redecorating, and piping changes. The 816 chassis is the solution to get your property back in service quickly and at the lowest total cost.



### DAMAGE PROTECTION

The standard high-pressure switch and evaporator coil freeze protection stop unit operation before damage occurs, should airflow become reduced or obstructed due to dirty coils, obstructed airflow, or motor failure or lock up. A freezestat protects the water coil from freeze damage due to water temperature or flow problems. The water coil is designed for low water-side pressure drop, eliminating potential pump sizing and water flow problems.



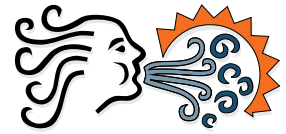
### OPTIONS AND ACCESSORIES

- Blower sections
- Return air panels
- Wiring configurations
- 265/277V (Varies by model)
- Hose kits
- 817 Shepherd's Cane H2O Tubing design
- Control options
- Flow control valve
- Motorized valve

\* Various wiring configurations were produced. See specs and price sheet for details.

# SERIES 816 REPLACEMENT CHASSIS

California Heat Pump CHP-RF and ClimateMaster 816



ADIRONDACK AIR

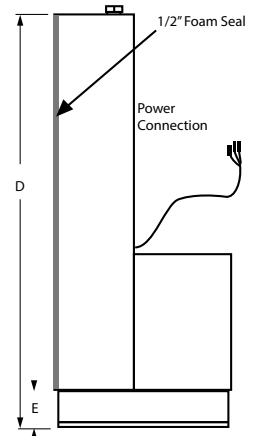
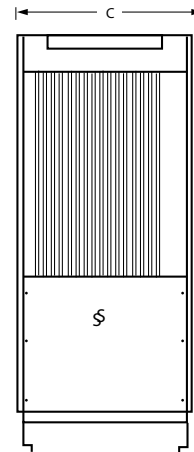
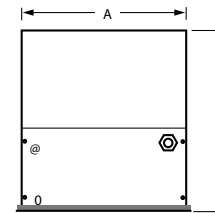
## Performance Ratings\*

Model	Cool* Btuh	Sens Btuh	EER*	Heat* Btuh	COP*	CFM (Design)	GPM	Coil PD	Refrigerant
816-10	9,900	7,250	13.7	11,300	4.30	345	2.5	1.8'	R-410A
816-12	12,700	9,700	14.4	13,700	4.40	420	3.0	2.5'	R-410A
816-15	14,000	10,100	13.3	17,200	4.3	465	3.8	4.6'	R-410A
816-20	20,800	16,100	14.4	22,800	4.70	695	5.0	3.9'	R-410A
816-28	27,800	21,500	15.1	29,300	4.30	900	7.0	8.4'	R-410A
816-30	28,000	21,000	14.7	30,000	4.20	900	7.0	8.4'	R-410A
816-36	38,000	29,700	14.0	46,000	4.20	1,200	9.0	3.9'	R-410A

Continuous engineering improvements may result in performance changes without notice.  
\*Includes Cold Point chassis and Cold Point blower assembly.

## Unit Sizes

Model	A	B	C	D	E	Filter Size	Chassis Weight (lbs)
	Inches						
816-10	14 1/2	15 5/8	15 1/2	36 1/4	3 3/4	14 x 20	91
816-12	14 1/2	15 5/8	15 1/2	36 1/4	3 3/4	14 x 20	91
816-15	14 1/2	15 5/8	15 1/2	36 1/4	3 3/4	14 x 20	100
816-20	17 3/4	18 5/8	18 1/2	41 1/4	4 3/4	17 x 27	135
816-28	21 1/4	22 1/2	22 1/4	41 1/4	4 9/16	26 5/8 x 20 1/2	210
816-30	21 1/4	22 1/2	22 1/4	40 9/16	4 9/16	26 5/8 x 20 1/2	210
816-36	20 1/2	22 1/2	22 3/8	41 1/4	4 1/2	28 3/4 x 20 1/2	220



Rome, New York 13440

Phone (315) 339-2331 • Fax (315) 339-2358

[www.ColdPointCorp.com](http://www.ColdPointCorp.com)

©2017 Cold Point Corp. All rights reserved.



CPL034 rev. 06-18